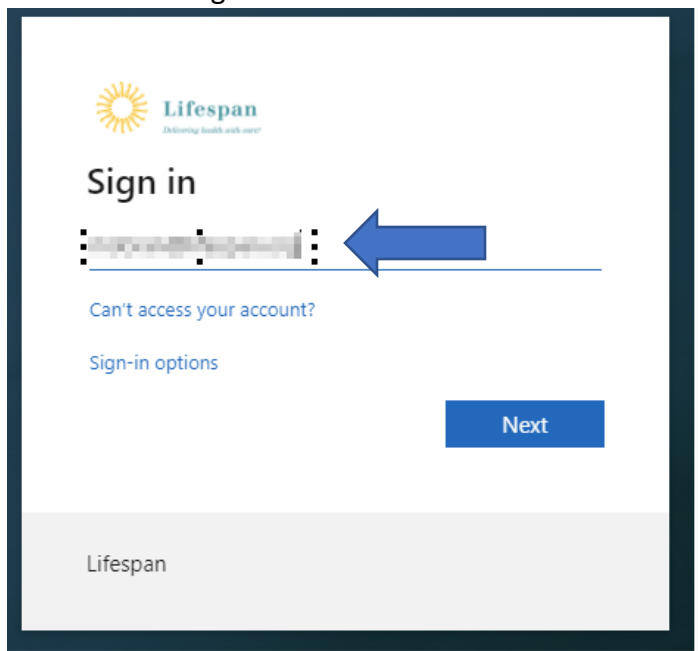


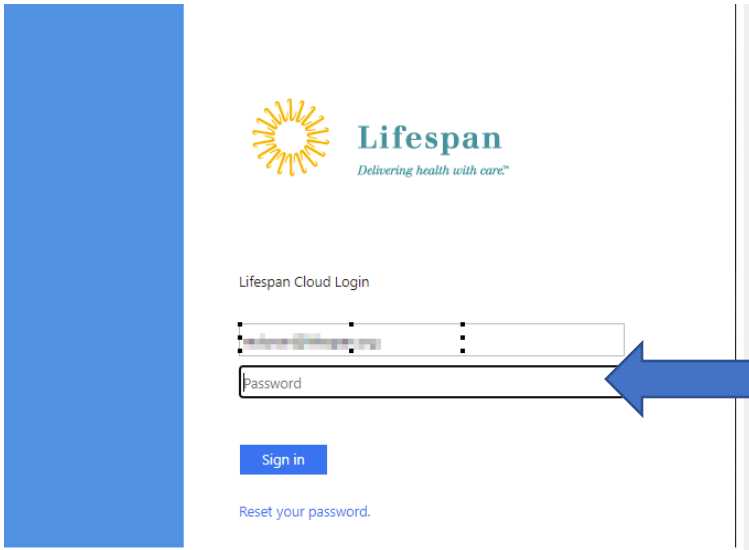
How to Access Connect.Lifespan.Org

Description: This document outlines the process on how to log on your Citrix session remotely using <https://connect.lifespan.org>. If you do not have Citrix Workspace installed, please review the Citrix Workspace installation guides based on your device. You will be prompted for your MFA code when you access <https://connect.lifespan.org> outside of a Lifespan facility.

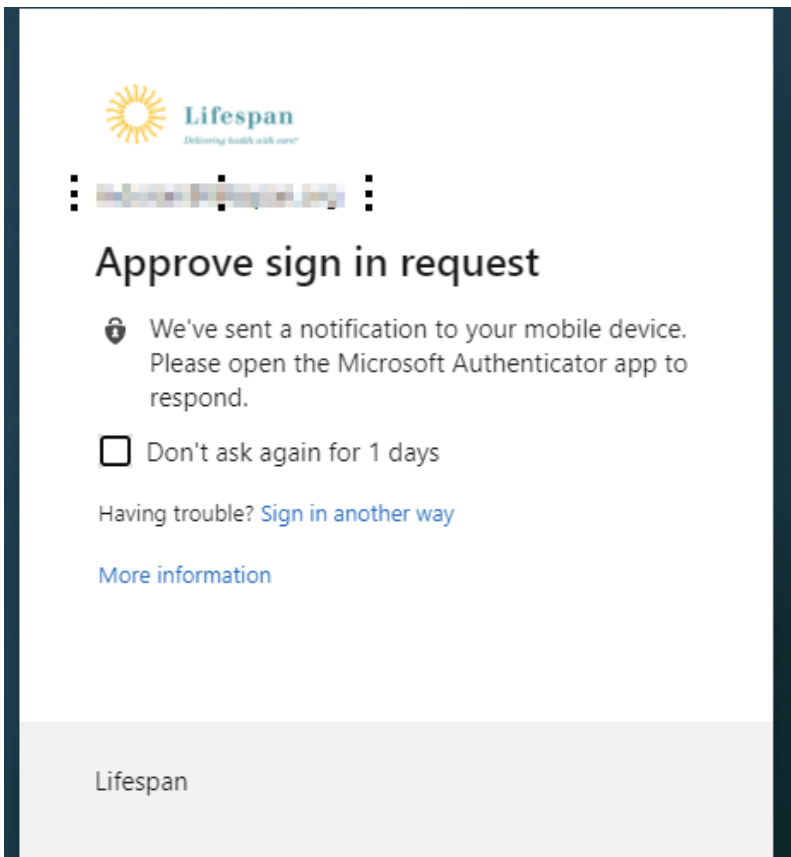
1. Enter <https://connect.lifespan.org> in your browser.
2. Enter your **username** followed by **@lifespan.org** in the field below. This will get cached after the first login.



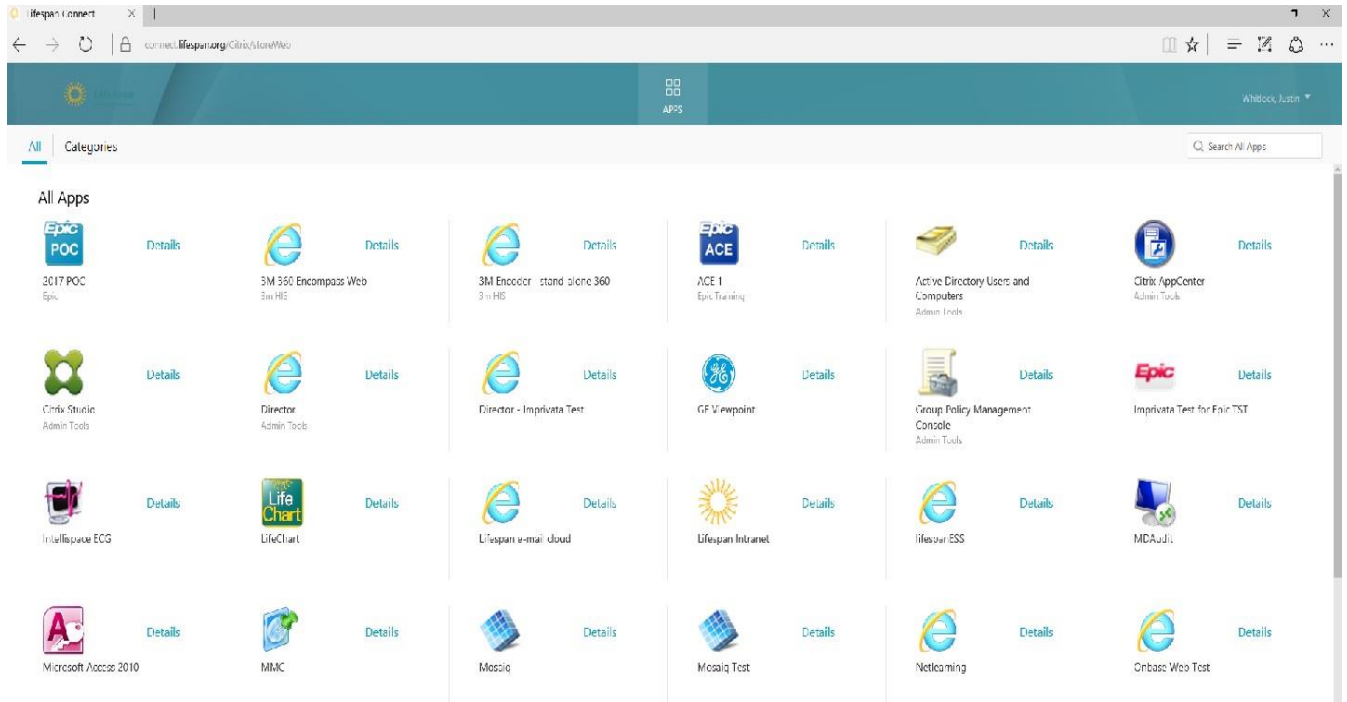
3. On the following screen, enter your password.



4. After you click the Log On button, you will need to accept your MFA prompt:



- At the next screen you should see all your applications. To launch an application, click on the icon.



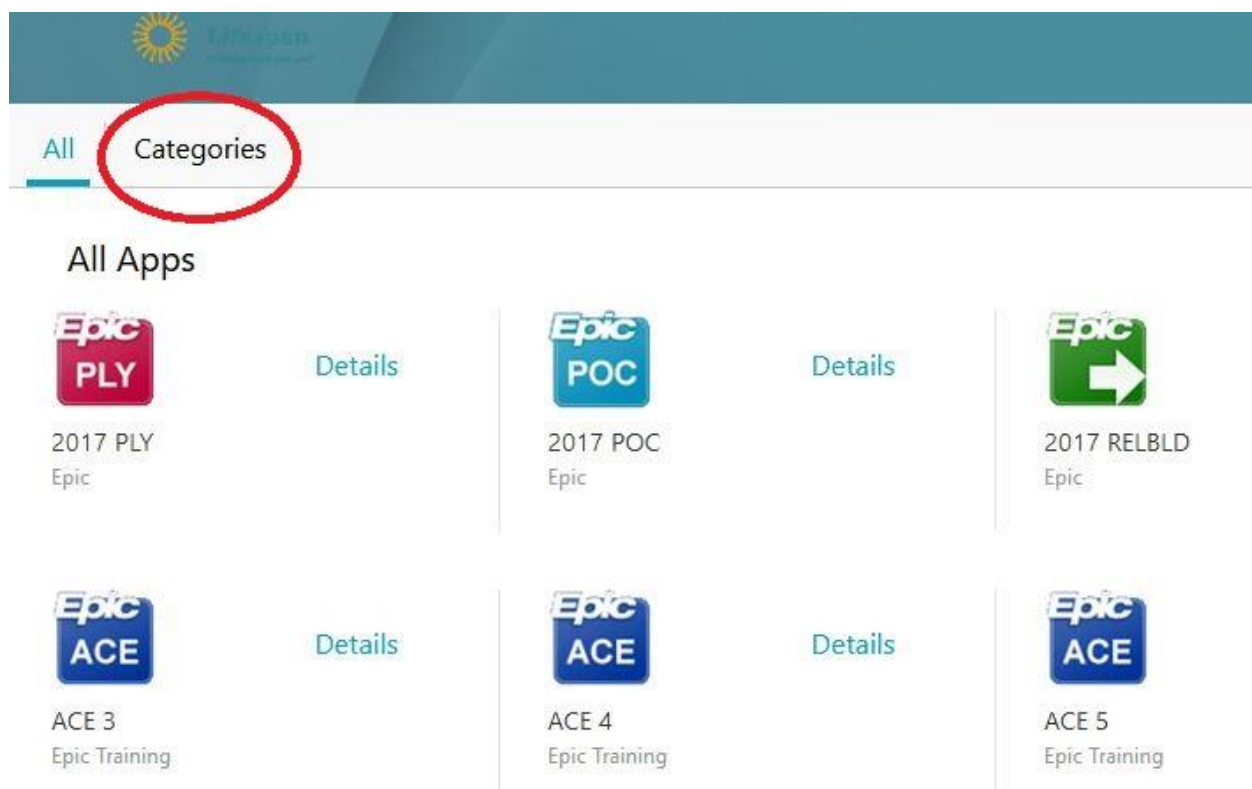
- After launching an application, you may see the below message



If you see this please check off "Do not ask me again for this site." And then hit "Permit use"



*****Note***** By default it shows the All Apps view. If you prefer a more classical folder type view, click the Categories tab at the top left.



In Categories view, the applications that do not have folders can still be accessed by clicking on their icons. For the applications that have folders, click the folder and then click the application



APPS

All Categories

2 3m HIS

8 Admin Tools

2 Epic

1 Epic Training

 Details
Director - Imprivata Test

 Details
GE Viewpoint

 Details
Imprivata Test for Epic TST

 Details
Intellispace ECG